

CHARTER TOWNSHIP of GRAYLING

RECREATION PLAN 2020-2024

DRAFT

OCTOBER 30, 2019 NOTE:

ALL ITEMS IN RED ARE IN NEED OF UPDATING BY THE
TOWNSHIP PLANNING COMMISSION

Presented by:

Charter Township of Grayling Planning Commission

Members listed here

Assisted by:



Northeast Michigan Council of Governments

Contents

Introduction	3
Community Description	3
Location and Geographic Context.....	3
Population and Housing.....	3
Natural Resources	4
Administrative Structure and Funding in Grayling Charter Township.....	5
Status Report of all Grant-Assisted Parks and Recreation Facilities.....	6
Recreation Inventory	7
Privately Owned Recreational Public Facilities	14
Regional Recreational Opportunities.....	14
Description of the Planning and Public Input Process	16
Goals and Objectives.....	17
Action Program	18
Fish Hatchery Park Nature Park	19
Motorized and Non-Motorized Trails	19
Plan Review and Adoption.....	21

Introduction

The abundance of natural resources combined with four seasons provide an ever-changing backdrop for enjoying the outdoors. The mix of County and Township owned facilities along with other publicly owned State Forest lands and campgrounds and privately owned recreation facilities offers a wide range of passive and active recreational opportunities. This Recreation Plan addresses recreational facilities and plans within the boundaries of Grayling Charter Township. The plan contains an inventory of recreational facilities and provides an action plan for future recreational improvements.

Grayling Charter Township, with the assistance of MC Planning & Design, prepared a recreation plan in 2015. The recreation plan was a component of the Township's 2015 Master Plan. Grayling Charter Township has decided to update of their 2015 recreation plan and now creates a stand-alone Township Recreation Plan. Grayling Charter Township intends to continue providing recreation services to its residents and visitors, but also plans to make improvements at the existing facilities, including compliance with Americans with Disabilities Act (ADA) and Universal Design standards, to improve accessibility for all. As a recreation service provider, the Township recognizes the importance of planning for future recreation services and facilities. A major factor in the provision of any service is the question of how projects will be funded. Recreation Plans that have been approved by the Department of Natural Resources allow the Township to be eligible for State of Michigan recreational grant funding.

Community Description

Location and Geographic Context

Grayling Charter Township is located in the central portion of Crawford County, which is situated in the Northeast region of Michigan's Lower Peninsula. Grayling Charter Township comprises 171.1 square miles of the County's 558 square miles of land area. Grayling Charter Township consists of five government survey townships, T26N-R4W, T26N-R3W, T27N-R3W, T26N-R2W and T27N-R2W. The Township is bounded on the north by Frederic, Maple Forest and Lovells Townships, on the east by Lovells and South Branch Townships, on the south by South Branch Township and Beaver Creek Townships and on the west by Kalkaska County, see Figure 1 for a location map.

Population and Housing

The 2010 Census showed that Grayling Charter Township had a population of 5,827, which equated to a 10.6% decline in population from the 2000 US Census. Prior to this, the township had experienced 30 years of population gains. According to the 2010 US Census the median age of the Township was 45 years. By comparison, the median age in Michigan was 38.9 years and for the United States, 37.2 years. The higher median age means there is a higher percentage of the population 45 years and older than in the state and country. The Township should consider an aging population when planning for recreation

facilities. The 2010 Census shows there were 4,289 housing units in the Township, of which 38 percent or 1,825 units were classified as seasonal.

Natural Resources

The woodlands, open spaces, wildlife, water, and rolling hills are several key resource values that draw people to both recreate and live in the Township. Abundant public lands offer access to thousands of acres of recreational lands for hunting, hiking, wildlife viewing and snowmobiling. Lakes, creeks and streams, especially the Au Sable River provide opportunities for fishing, boating and water sports. Waters.”

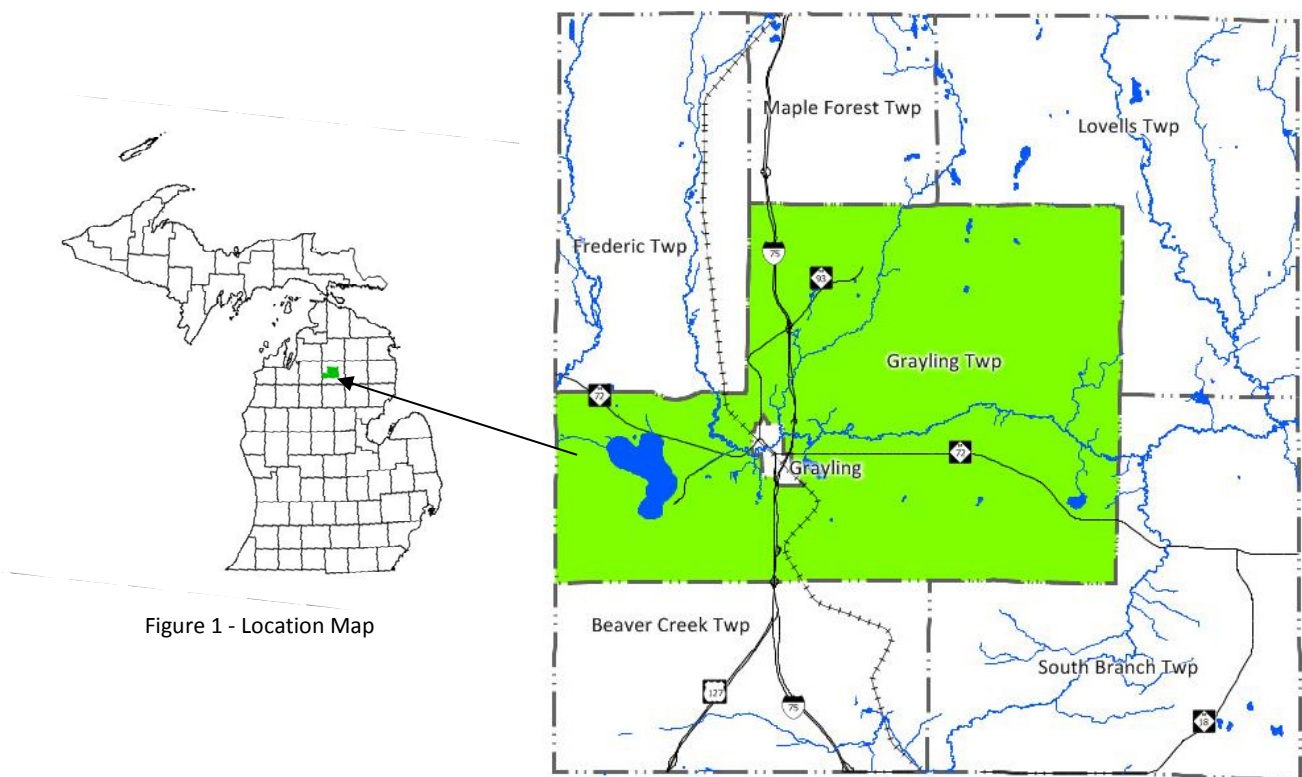


Figure 1 - Location Map

A rural landscape, abounding with views of forestlands and wetlands, typifies the community character of Grayling Charter Township. Forestlands are important to the local economy; recreational use and production of forest goods bring dollars into the Community. Many long-time visitors decide to move to the area upon retirement.

Typical of northern Michigan, the distinct four seasons offer an ever-changing landscape. Long snowy, cold winters and moderately warm summers are separated by a cool, green spring and a cool, colorful fall. The Township is approximately 35 miles inland from Lake Michigan and 55 miles inland from Lake Huron. Given this geographic location, the area is influenced by lake effect snowfall from Lake Michigan.

The common forest types are pine (mostly jack pine) and mixed oak forests. The combination of sandy, droughty soils and fire prone species like jack pine, the area has been subject to wildfires for thousands of years. The Kirtland's Warbler requires young thick jack pine forests for nesting and raising their young. Uncontrolled wildfires once created needed habitat. Today, the US Forest Service and the Michigan Department of Natural Resources manage the jack pine forest to create young forests for the warbler while also working to suppress wildfires. Lowland conifer and lowland hardwood forests can be found adjacent to streams and associated with Lake Margrethe.

The Au Sable River watershed drains approximately 1,932 square miles within portions eight counties. The main branch enters the County in the northwest corner and flows out of the southeast corner. An eight mile stretch of the Main Branch of the Au Sable, east of Grayling, from Burton's Landing downstream to Wakely Bridge, is designated flies-only, no-kill water. This segment is known as "the Holy Water." The East Branch, North Branch and South Branch all flow into Crawford County and empty into the main stream as it traverses the County. The Au Sable is rated as a "Blue-Ribbon" trout stream and is designated as a Michigan Natural River. Since 1947, the Au Sable River Canoe Marathon, a yearly 120 mile (190 km) pro-am canoe race, runs the river from Grayling to Oscoda.

Administrative Structure and Funding in Grayling Charter Township

Grayling Charter Township operates under an administrative structure consisting of a Township Supervisor, Township Clerk, Township Treasurer and four Township Trustees. These positions are elected by registered voters of the Township. The elected offices for Township Supervisor, Clerk, Treasurer and Trustees are four year terms. Bylaws adopted by the Township Board determine the order of business and method of conducting regular township business. Meetings are conducted using *Robert's Rules of Order*. For issues that require a vote for making a determination, a simple majority of the Township Board present is required.

Parks and recreation facilities are under the direct control of the Township Board of Trustees. The Township Planning Commission is responsible for creating the Recreation Plan.

Township Parks & Recreation Staff

Grayling Charter Township employs one part-time staff for maintenance of recreational facilities. Township recreation planning is handled by the Township Board. Other individuals typically involved in recreational activities at the Township level include: Township Board Members, Township Planning Commission, other Township staff and volunteer groups.

Grayling Charter Township Budget and Recreation Expenditures, 2016-2019			
Budget			
FY Ending Mar 31	2016-2017	2017-2018	2018-2019
Recreation	\$1,269	\$23,125	\$103,925

Total Township	\$1,241,507	\$1,526,664	\$1,624,225
Expenditures			
Recreation	\$1,269	\$23,125	\$153,925
Source: Grayling Charter Township Profit & Loss Budget Sheets, 2016-2019			

Table 1

Relationships with Other Agencies

Numerous groups within the county are involved with the improvement and operation of the recreational facilities in Crawford County. The majority of these organizations are operated on a volunteer basis. The organizations and special interest groups that assisted to provide recreation opportunity in Crawford County are:

1. Crawford County Trails Sub Committee
2. Crawford AuSable Soccer Association
3. Redskins Football
4. Little League Baseball
5. Crawford AuSable Athletic Director
6. Grayling Parks and Recreation Committee
7. Crawford County Commission on Aging (Grayling Senior Center)
8. Grayling City Parks & Recreation
9. MSUE 4-H
10. Youth Scouting (Boy Scouts/Girl Scouts)
11. Hanson Hills Recreation Authority
12. Canoe Marathon
13. Fish Hatchery
14. Anglers of the Au Sable

Status Report of all Grant-Assisted Parks and Recreation Facilities

The following is a summary of the grant assistance which has been received by Grayling Charter Township. Post-completion certification reports for each of these projects are provided under separate cover.

Grayling Charter Township**Project No. TF00-388****Project Year: 2000****Project Title:** Nature Park by the Fish Hatchery**Project Status:** Closed**Grant Amount: \$230,000.00****Element**

Paving Road and parking

Water, Electric and Septic

Public Restrooms

Signage

Trail Development

Playground Equipment

Element

2 Fishing decks

Pavilion

Bridge over River

Landscaping

Project Description: Development of a new park which is located on the east branch of the AuSable River, including play equipment, walkways and fishing piers.**Recreation Inventory**

An inventory of existing recreation facilities located in Grayling Charter Township is provided below. Sites are grouped according to jurisdictional ownership. Township owned facilities are listed first, then other public sites, privately owned campgrounds, Grayling Recreation Authority facilities, recreation trails, boat/fishing access sites and canoe liveries. Each listing is followed by a brief description of that location. Figures 2, 3, and 4 illustrate the location of the public recreation sites and trails.

FACILITIES OWNED BY CHARTER TOWNSHIP OF GRAYLING				
Name	Classification	Description	Accessibility	Size
Grayling Charter Township Fish Hatchery Park	Natural Urban family recreational area	Located on AuSable River East Branch close to City of Grayling and Grayling Fish Hatchery. Large playground, picnic pavilion, hiking trails, disc golf course, swimming and fishing	2	20 ac on E side and 4 ac on W side of river

Table 2

State Parks, State and Federal Forest Campgrounds in Grayling Charter Township

STATE & FEDERAL RECREATIONAL FACILITIES		
Facility	Amenities	Location
AuSable River State Forest Campground and Canoe Camp	13 campsites (5 are canoe access only) hiking, picnicking, fishing, wildlife viewing	Grayling Charter Township, 5.5 miles east of Grayling
Burton's Landing Canoe Launch	12 campsites, canoeing, fishing	Section 10, Grayling Charter Township
4 Mile State Forest Trail Camp	50 campsites, horse camp, horseback riding, boat launch, fishing, canoeing, hiking, wildlife viewing	9 miles southeast of Grayling, Grayling Charter Township
Hartwick Pines	100 campsites, hiking, mountain bike trails, fishing,	6 miles Northeast of Grayling,

	logging museum & camp, Interpretive Center	Grayling Charter Township
Keystone Landing Campground	18 campsites, canoeing, fishing, canoe launch	Section 11, Grayling Charter Township
Kneff Lake Campground	26 campsites, boating, fishing, swimming, picnicking	7 miles southeast of Grayling, Grayling Charter Township
Lake Margrethe Forest Campground	37 campsites, boating, swimming, fishing, boat ramp reservations available	Section 17, Grayling Charter Township
Louie's Landing	Fishing, Hiking, Wildlife	East 3.4 miles from South Down River Road (M-72) and Business I-75, then ½ mile north on Louie's Landing Road
Rayburn's Trail	Hiking, Wildlife, Picnicking, Fishing	Rayburn Forest Preserve
Wakeley Lake Area Federal Forest	4 walk-in campsites, limited fishing, trails	Section 23, Grayling Charter Township, 10 miles southeast of Grayling

Table 3

PRIVATE RECREATIONAL RECREATION FACILITIES		
Facility	Amenities	Location
Fay's Motel	Snowmobiling	Grayling Charter Township
Finley's Riverside Cabins	Rental cabins on 18 acres	Grayling Charter Township
North Country Lodge		Grayling Charter Township
River Park Campgrounds		Grayling Charter Township
Yogi Bear's Jellystone Campground	218 Campsites	Grayling Charter Township
Gates Au Sable Lodge	16 motel-style rooms	Grayling Charter Township

Table 4

CRAWFORD COUNTY AREA RECREATIONAL FACILITIES				
Name	Classification	Description	Accessibility	Size
Hanson Hills Recreation Area	Large Urban Park Natural Resource Area Sports Complex	Large Park/Open Area that is located on State Land. Area is close to town, with bordering neighborhoods. Consists of Ski Lodge, Downhill Ski run, Nordic Ski trails, and Tubing Hill. Mt. Bike and Hiking Trail System. Includes Playground Area, Softball and Soccer Fields, Archery Facility, Disc Golf Course, Fishing Pond and Picnic Area.	2	277 Acres (Leased) 1500 Acres approx. (Special Use Permit)

Grayling Fish Hatchery	Special Use	Fish Hatchery Located in town, Bordering numerous residential areas. Includes Trout fishing tanks, Museum building, Picnic Area.	3	50 Acres
Crawford County Sportsplex (fairgrounds)	Sports Complex	Concession stand, ball fields, soccer fields	2	30 acres
Wakeley Bridge Canoe Launch	Mini-Park	Canoe access	1	½ acre
Township Park		Park leased to Grayling Charter Township on 99 year lease		
City of Grayling Canoe Launch	Park	New canoe launch along the Au Sable River	1	

Table 5

[illegible]

10

RECREATION TRAILS		
Trail	Description	Location
MULTI-USE TRAILS		
Iron Belle Trail	Statewide multi-use non-motorized trail	State of Michigan
Mason Tract Trail	Point to point hiking and cross country skiing trail along the South Branch AuSable River	Between Chase Bridge and M-72, 14 miles east of Grayling
Michigan Shore to Shore Hiking and Riding Trail	Point to point trail hiking and riding trail from Lake Huron to Lake Michigan	Parallels M-72, South Branch Twp.
Midland to Mackinac Hiking Trail	Point to point hiking and backpacking trail that extends from Midland to Mackinac City	Parallels F97, South Branch Twp.
Hanson Hills Trails	Skiing, biking, hiking	Hanson Hills Recreation Area
Hartwick Pines	Skiing, biking, hiking	Hartwick Pines State Park
Grayling Non-motorized Pathway (<i>Grayling Bicycle Turnpike</i>)	Biking, walking, running	
Wakeley Lake Trail	Skiing, hiking	National Forest Service System
ORV TRAILS		
Cycle Conservation Club ORV Trail	Motorized off road vehicle trail	Pioneer Rd, to South of Hunters Trail in Beaver Creek Twp.
West Higgins ATV Trail	Motorized off road vehicle Trail	South of Hunters Trail in Beaver Creek Twp.
The Meadows ORV Trail	Motorized off road vehicle trail	Pioneer Road, South Branch Twp.
Frederic ORV Loop	Motorized off road vehicle Trail	Frederic Twp.
Frederic ORV Route	Motorized off road vehicle Trail	Batterson Road to M 93 along N Old 27
SNOWMOBILE TRAILS		
Trail #4	Snowmobile Trail	Lovells Twp.
Trail #7	Snowmobile Trail	Frederic to Beaver Creek
Trail #9	Snowmobile Trail	Meridian Road at east boundary of South Branch Twp.
Trail # 47	Snowmobile Trail	Grayling to Lovells
Trail #79	Snowmobile Trail	M-72 to Kalkaska Co.
Trail #409	Snowmobile Trail	Lovells Twp. to Oscoda Co.
Trail #482	Snowmobile Trail	4 Mile Road to Grayling along I-75 Corridor
Trail #487	Snowmobile Trail	South east corner of Grayling Twp.
Trail #489	Snowmobile Trail	Beaver Creek Twp

Table 6

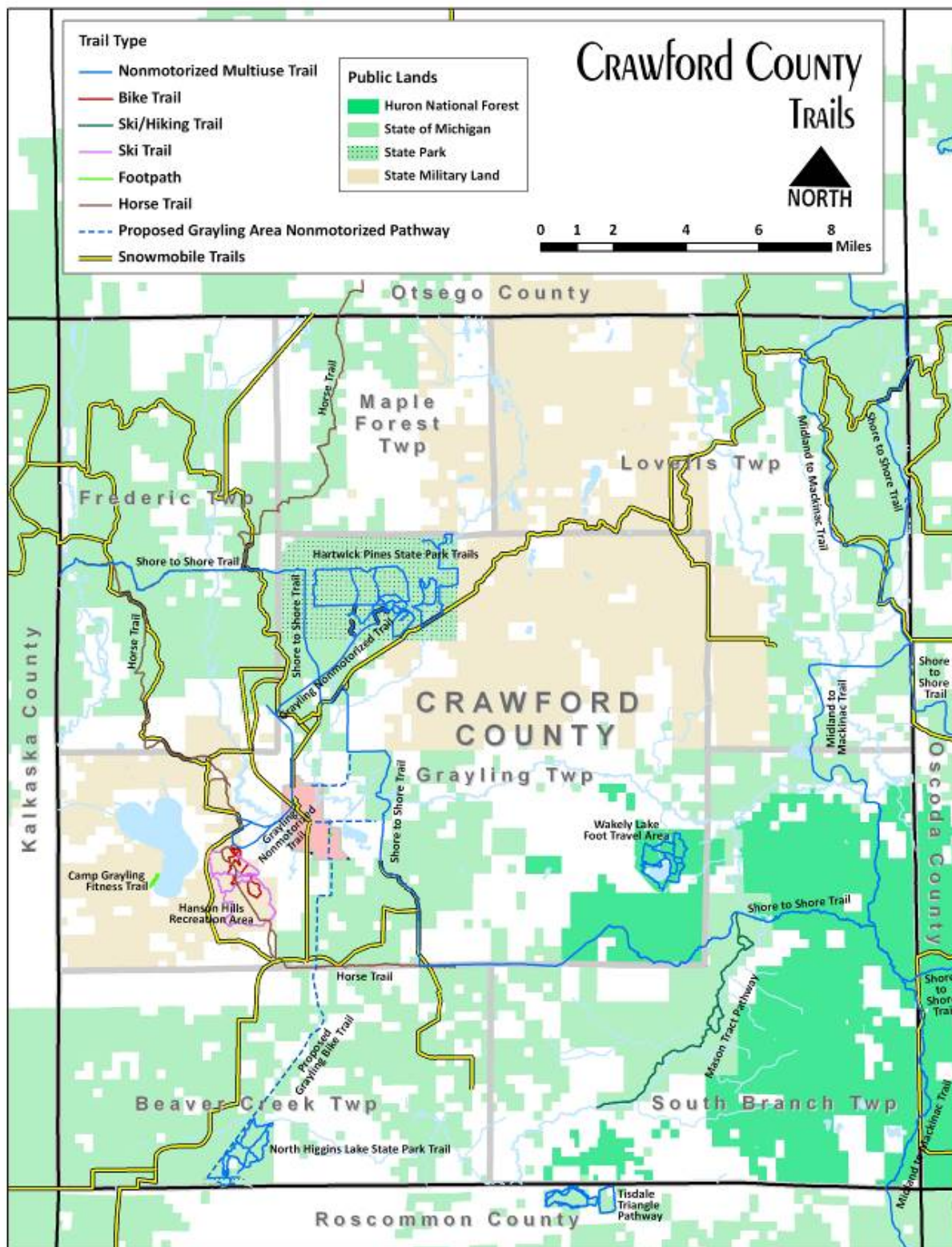


Figure 3

Bike Trails (excerpt Northeast Region Road and Trail Bicycle Guide-3rd edition—used with permission)

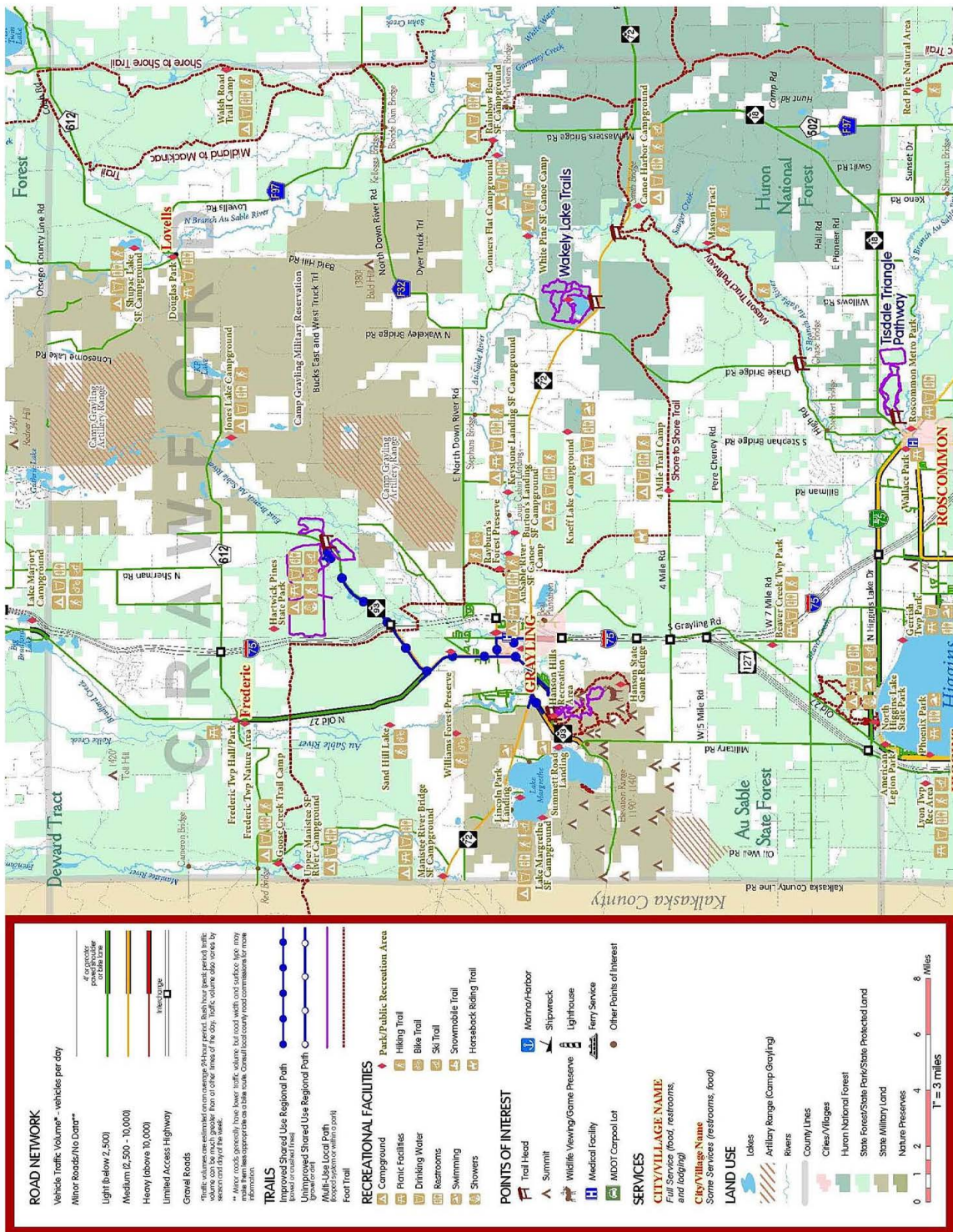


Figure 4

Recreational Boat and Fishing Access Sites in Crawford County		
Access site	Amenities	Location
Bright Lake	15 parking spaces, toilets, Fishing pier, Recreation Passport required	Hartwick Pines State Park
Conner Flats	6 parking spaces, toilets	Connors Flats Rd. Grayling SE
Glory Lake	15 parking spaces, toilets, fishing pier, Recreation Passport required	Hartwick Pines State Park
Lake Margrethe	30 parking spaces Recreation Passport required	Via McIntyres Landing Rd, Grayling SW
City of Grayling Canoe Launch		
Various Au Sable River boat launches		All along the Au Sable River, often at bridges

Table 7

Canoe Liveries	
Borcher's AuSable Canoeing	AuSable River, Grayling
Jim's Canoe Livery	Ausable River, Grayling
Long's Canoe Livery	Manistee River, Frederic Township
Penrod's	AuSable River, Grayling
Carlisle Canoe Livery	AuSable River, Grayling
Shel-Haven Canoe Rental	Manistee River, Frederic Township

Table 8

Privately Owned Recreational Public Facilities

In addition to the above listed recreational opportunities, Crawford County is host to a number of other private recreational facilities including a bowling alley, boys and girls camps, golf courses, miniature golf, shooting range and senior center. Crawford County also has numerous resorts, cabins and motels that are utilized by fishermen, hunters and other sports enthusiasts for overnight accommodations. Most of these facilities are located in and around the Grayling and Frederic area.

Regional Recreational Opportunities

The amounts and types of recreation opportunities, which are available in neighboring counties, are highly variable. All neighboring counties have an ample supply of state and/or federal lands, much of which can be used for recreational activities, including hunting, fishing, hiking, wildlife viewing, etc. The closest neighboring community to the major population of Crawford County is Roscommon (Roscommon County). Roscommon has a variety of recreational facilities including a community recreation/fitness center. They also have an outdoor ice rink, a soccer field and tennis courts.

Roscommon is approximately 15 miles from Grayling. Higgins Lake and Houghton Lake both provide recreational water opportunities.

To the north, Gaylord (Otsego County) has several recreational facilities that are open to the public. The Sportsplex offers an indoor ice rink and swimming pool. There are several ski lodges, groomed cross country ski trails, golf courses, a bowling alley and theatre complex. The travel distance from Gaylord to areas in Crawford County vary from about 20 minutes to close to one hour.

Oscoda County, to the east, is a very rural county with few recreational facilities beyond state and federal lands and campgrounds and the AuSable River. The area does offer a major golf/cross country ski resort. The travel distance from Crawford County to Oscoda County ranges from 30 minutes to more than one hour.

Kalkaska County is located to the west of Crawford County. Located within the City of Kalkaska are a variety of recreational opportunities. The area has a roller skating rink, an archery course and a sportsplex called "Kaliseum". They also have an assortment of sports teams such as Little League, soccer and softball. Kalkaska is a 30 minute drive from Grayling, but is over an hour from other portions of the county.

Description of the Planning and Public Input Process

Planning Process

The update of the Recreation Plan began in the fall of 2019. The planning process included a series of public meetings with the Township Planning Commission. The Commission met on _____, _____ and _____ to discuss and revise the plan. The preliminary draft plan was posted on the Township's website and made available at the _____ on _____, 2019. Grayling Charter Township held a public hearing on _____, 20___. A legal notice was published in the _____ Newspaper at 30 days prior to the public hearing to allow citizens ample time to review and comment on the draft plan. The posting of flyers and a web posting help announce the availability of the draft plan. Minutes from the public meetings and public hearing minutes are included in Appendix A. The Recreation Plan was adopted by the Grayling Charter Township Board of Trustees on _____, 20__.

Public Input

Public input was gathered through a survey and several public meetings. The Planning Commission discussed the Recreation Plan at their monthly meetings as well as an advertised public hearing was held to obtain input from citizens. Minutes from the various meetings and public hearing are provided in Appendix A.

The Grayling Charter Township Parks and Recreation Committee prepared a survey for general planning purposes to gauge public support for various recreational improvements. A total of _____ completed surveys were submitted. A summary of the results is presented in Appendix A. It was clear from the comments that many respondents did not want to pay more taxes to support recreational improvements. Township does not have any plans to raise taxes, and intends to apply for grants to cover much of the cost of the priority projects, however since it appears this was not widely understood, the survey findings are probably less supportive of various recreation opportunities, than they may have been if the respondents realized the projects will not increase their tax bill.

Goals and Objectives

In the review of past goals and recent input, the following overall goal and component goals were developed and apply at the Township level.

Recreation and Public Lands

Preserve and improve access to public lands and water, recreation trails, public parks and recreation facilities for the safe enjoyment by residents, visitors, and future generations.

ADDITIONAL COMPONENT GOALS:

1. *Pursue improvements to recreational opportunities within Grayling Charter Township.*
2. *Educate public to preserve and protect natural environment to leave better than when they arrived.*
3. *Ensure public recreational facilities and activities are open and accessible to all.*
4. *Work cooperatively with appropriate agencies and units of government to develop and maintain an extensive network of trails and the necessary support facilities for each, including hiking, biking, horseback riding, x-c skiing, snowmobiling, ORV, canoeing, kayaking fishing, alpine skiing, snowshoeing, tubing, and hunting.*
5. *Work cooperatively with appropriate agencies and units of government to establish and maintain access sites for canoe/kayak use and fishing access, and promote the local water trails.*
6. *Work cooperatively to promote recreational opportunities in the area and the related economic benefits for the region, including providing support for the Trail Town initiative.*

Grayling Charter Township - Recreation Goals & Objectives

Goal 1. Pursue improvements to recreational opportunities that are not currently available within the township.

Objectives

- a. Expand recreational facilities within the township.
- b. Improve park with canoe launch, handicap access to fish hatchery.
- c. Construct two fishing and viewing decks.
- d. Provide additional benches and picnic tables.
- e. Open existing roads on state and military land.
- f. Establish ad hoc committee to work with the DNR on opening up old trails which are no longer in use.

Goal 2. Ensure township sponsored recreational facilities and activities are open and accessible to all members of the public, regardless of age, race, ability, etc.

Objectives

- a. Construct fishing site to be accessible to all people.
- b. Pave the parking lot and trails will help make the park barrier free.
- c. New construction will meet barrier free accessibility requirements for parks.

Goal 3. Ensure public recreational facilities and activities are open and accessible to all.

Objectives

- a. Protect, preserve, respect
- b. Protect our natural environment, preserve quality, protect private and public property in the township using (i.e. signage)

Action Program

The following action program is presented by jurisdiction including the proposed projects and rationale for each. These lists were developed by each jurisdiction in consideration of input received from the Recreation Stakeholders group and other public input received. The public input summaries are presented in Appendix A.

GRAYLING CHARTER TOWNSHIP CAPITAL IMPROVEMENTS SCHEDULE					
Project #	Year	Project	Est. Cost	Funding Source(s)	Priority
1	2022	Provide more picnic tables, benches and trash containers along the hiking trails.	\$5,000	Local, DNR	3
2	2023	Pave entry road, parking lot and hiking trails	\$60,000	Local, DNR	4
3	2022	Canoe Launch at park	TBD	Local, DNR	1
4	2021	Township Park to fish hatchery accessible trail	TBD	Local, DNR	2

Table 9

Grayling Charter Township Rationale

Project #	Justification
1	As the park trails become more utilized, it will be important to offer easy disposal of waste to help maintain the parks clean nature. The benches and tables will allow multi-generations to use the trail, while providing resting opportunities.
2	Paving the parking lot will make it easier for handicapped citizens to use the park. This will enable even more residents to enjoy the park.

3	North Down River Road is extremely busy and poses potential danger for residents to cross over into the park. This will make the park more accessible for young and old alike and encourage non-motorized travel. First launch on east branch with better access to main stream.
4	Create Trail for ADA access to fish hatchery.

Table 10

Grayling Charter Township Basis for Action

There are 5,720 people living in Grayling Charter Township as estimated in the most recent Census Bureau data (2013-2017 American Community Survey 5-year estimates). Referring to this same ACS dataset, the demographics of Grayling Charter Township indicate that a large majority (69.5%) of the Township exists as family households. While 514 (20.7%) households have children under the age of 18, there are 846 households that have individuals over the age of 65. Over half (50.6%) of the township residents are between the ages of 25-64. Also, there were estimated to be 1,060 residents with disabilities in Grayling Charter Township. Due to the large number of residents who are able to pursue active recreation as well as the high number of households with children and persons with disabilities, Grayling Charter Township must plan recreational facilities that will appeal to a wide variety of people. In addition, with the median household income of the Township being \$50,557, recreation must be fairly affordable.

Grayling Charter Township has one part-time staff for recreational activities. Township recreation is handled by the Township Board. Due to the fact that there are more developed recreational facilities and more cultural opportunities in the nearby City of Grayling, Grayling Charter Township intends to capitalize on its natural assets to fulfill the needs of the Township. Therefore, Grayling Charter Township intends to develop its outdoor recreation to suit the needs of differing age groups, income levels, and physical abilities of Township residents and visitors.

Fish Hatchery Park Nature Park

Grayling Charter Township plans to utilize this property to fill recreational gaps for all residents. The Township intends to develop the park property to include recreational opportunities for a variety of recreation activities and for all ages. To accommodate the increased usage, the parking lot will need to be improved. It is the townships desire to increase recreation opportunities at the park.

Motorized and Non-Motorized Trails

Crawford County currently enjoys a host of hiking, biking, cross country skiing, snowshoeing, ORV, snowmobile, and water trails. In addition, the City of Grayling has sidewalks on virtually every city street that allows numerous people to walk wherever they would like in the community. That said, opportunities still exist for new trails and improvements to existing trail systems. The City of Grayling has developed a Trail Town Master Plan to further enhance these recreation resources. The Trail Town Initiative is intended to meet the needs of the trail users by providing: 1) physical amenities that support trail users such as signage, trail information, wide sidewalks, drinking fountains, and benches, and 2) business amenities to support day-trip and overnight trail users such as a bike shop, kayak outfitter, ice-

cream shop, hotels and restaurants. The Recreation Plan Proposed pathway projects are consistent with the Northeast Michigan Regional Non-motorized Transportation Plan and Investment Strategy.

Plan Review and Adoption

The Grayling Charter Township Board held a public hearing on the Recreation Plan on _____. The Township Board subsequently adopted the recreation plan on _____, a copy of the hearing minutes and resolutions of adoption are included in Appendix A.

Recreation Plan adoption resolution

The Recreation Plan was adopted by official resolution, by the Grayling Charter Township Board of Trustees on _____ and a copy of the resolution is included in Appendix A.

Transmittal to the Regional Planning Agency.

The adopted plan was transmitted to the Northeast Michigan Council of Governments on _____, a copy of transmittal letter is provided in Appendix A.

Transmittal to the County Planning Agency.

The adopted plan was transmitted to the Crawford County Planning and Zoning Department on _____, a copy of transmittal letter is provided in Appendix A.

Recreation Plan Certification

A copy of the Recreation Plan Certification is in Appendix B.

Description of the Recreation Planning and Public Input Process

